



nitro pro 7
deployment guide



Introduction

The following commonly requested configuration is included by default for the MSI deployment package. The Retail (Single EXE) installer is only recommended in unsecured desktop environments where all users have full Administrative permissions to their machine.

The differences between the MSI package and the regular EXE installer are as follows:

- *Learning Center* (splash screen) does not display at start up
- Buttons to directly contact Nitro support have been removed from the *Help* ribbon
- Automatically Check for Updates is turned off.
- *Silent Installation* (with no user interaction) is supported

Please note that for Windows XP and Server 2003, .NET 2.0 must be installed on the target system prior to deployment.

Command Line Installation

The syntax for command line installation is as follows, where **NPXXX** is replaced with your serial number, with any dashes or spaces omitted.

```
msiexec /i \\server\path\nitro_pdf_professional7.msi /qb NP SERIAL=NPXXX
```

For further information on command line parameters, please refer to the MSDN Documentation for Windows Installer 3.0 at <http://msdn.microsoft.com/en-us/library/aa367988.aspx>

Customizing Installation with Nitro Deployment Wizard

The Nitro Deployment Wizard can be downloaded from the following location:

http://supporttools.nitropdf.com/Nitro_EnterpriseDeployment.exe

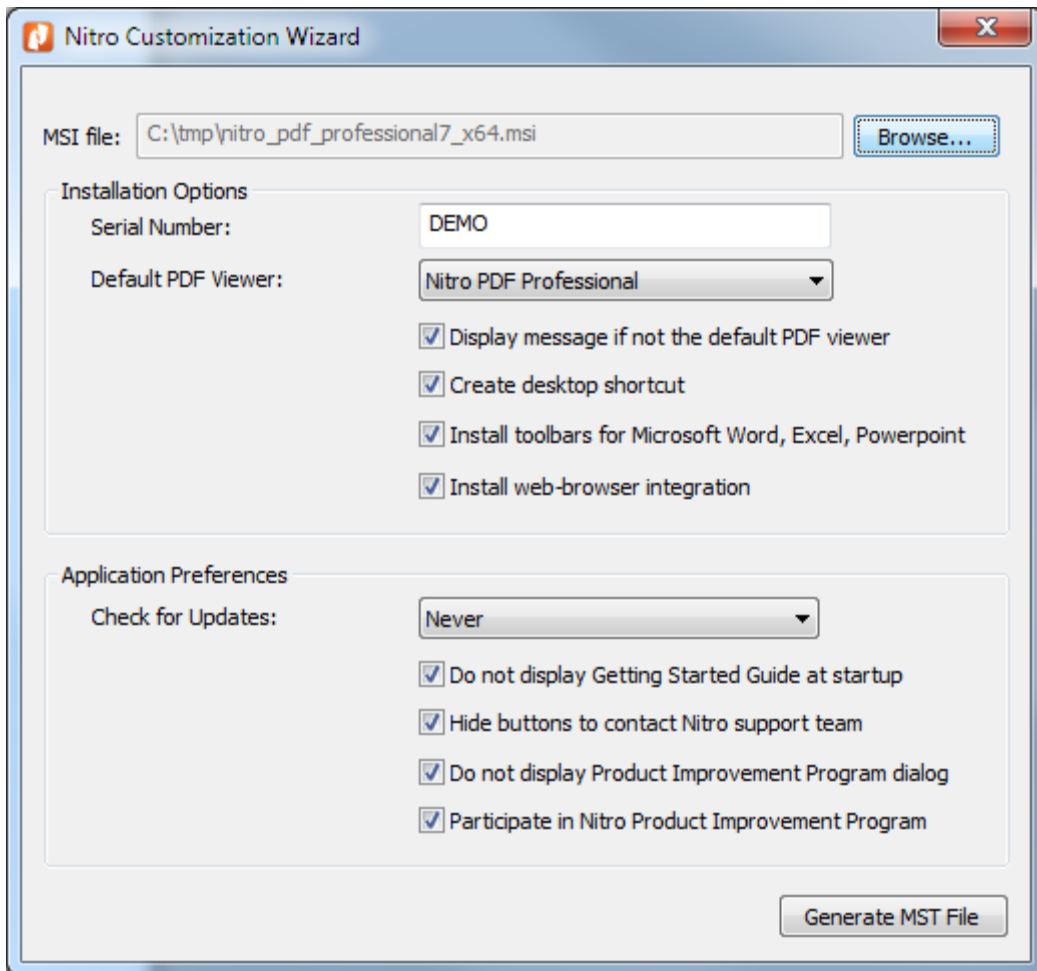
- Download the wizard from the link above
- Run the wizard, using the **Browse...** button locate and open **nitro_pdf_professional7.msi** (this filename will vary depending on the product purchased and selected installation architecture)
- Add your serial number, and select the desired installation options as indicated in the screenshot below.
- Click **Generate MST File** to create an MST

The newly created transform can now be used for installation via GPO/AD, command line or your chosen deployment tool.



Example:

```
msiexec /i \\server\nitro_pdf_professional7.msi /qb  
TRANSFORMS=\\server\custom.mst
```



Customizing Installation with Orca

Orca¹ is an MSI database editor provided by Microsoft as part of the Microsoft Windows SDK² - for your convenience we have made this available as a standalone download from <http://supporttools.nitropdf.com/orca.msi>

Using Orca permits you to customize additional properties that are not available with a command line installation and create a Transform file (MST file), commonly used with Group

¹ [http://msdn.microsoft.com/en-us/library/aa370557\(v=vs.85\).aspx](http://msdn.microsoft.com/en-us/library/aa370557(v=vs.85).aspx)

² [http://msdn.microsoft.com/en-us/library/aa370834\(v=vs.85\).aspx](http://msdn.microsoft.com/en-us/library/aa370834(v=vs.85).aspx)



Policy Objects/Active Directory software deployment.

To customize your installation, follow these steps.

- Install Orca from the link above.
- Browse to the location of **nitro_pdf_professional7.msi** (this filename will vary depending on the product purchased and selected installation architecture)
- Right click on nitro_pdf_professional7.msi and select Edit with Orca
- Select Transform > New Transform
- Scroll down the left column and select the **Property** table.
- Find **NPSERIAL** in the right column, and double click on the entry **DEMO** to edit. Replace this with the serial number provided. Observe your changes highlighted in **green**.
- Modify any additional properties as detailed in the table below (*Optional*)
- Select Transform > Generate Transform
- Enter a name for your newly created Transform file.
- The newly created transform can now be used for installation via GPO/AD, command line or your chosen deployment tool.

Example:

```
msiexec /i \\server\nitro_pdf_professional7.msi /qb  
TRANSFORMS=\\server\custom.mst
```

Customizable MSI Properties

- | | |
|-------------------|--|
| • NPSERIAL | Serial number (do not include any dashes or spaces) |
| • DT_SHORTCUT | Create Desktop shortcut? (Yes=1/No=0) |
| • OFFICEADDINS | Install MS office addins? (Yes=1/No=0) |
| • NP_PDF | Default PDF file association (e.g. NitroPDF.Document, AcroExch.Document) |
| • NP_FDF | Default FDF file association (e.g. NitroPDF.FDFDoc, AcroExch.FDFDoc) |
| • NPBROWSERPLUGIN | Install web browser plugin for Firefox/IE (Yes=1/No=0) |
| • NPPIPENABLED | Product Improvement Program enabled (Yes=1/No=0) |

Deploying Custom Preferences with an MSI Transform

Please refer to the documentation for your chosen deployment tool for more details on how to deploy with an MST. For msiexec.exe command line installation with the TRANSFORMS property refer [http://msdn.microsoft.com/en-us/library/aa372085\(v=vs.85\).aspx](http://msdn.microsoft.com/en-us/library/aa372085(v=vs.85).aspx)



Example:

```
msiexec /i \\server\path\nitro_pdf_professional7.msi /q  
TRANSFORMS=\\server\path\nitro_pdf_professional7.mst
```

Remote Desktop Services & XenApp Installation

Prior to deployment on XenApp (Published Desktop or Published Application) or Remote Desktop Services you will need to request a custom serial number for your server for the correct number of licensed users. By default, Nitro will register itself as the system-wide default application for viewing all PDF files. If the number of users on your server exceeds the number of users licensed for Nitro, you will need to configure another PDF application as the “system” default viewer.

This can be achieved by setting the NP_PDF and NP_FDF properties to the desired ProgID of the target application.

Remote Desktop Services Notes

- Installation should be completed using **Install Application on Terminal Server**, found under the Control Panel. See the Microsoft best practices article here -> [http://technet.microsoft.com/en-us/library/cc742815\(WS.10\).aspx](http://technet.microsoft.com/en-us/library/cc742815(WS.10).aspx).
- To be presented with the option to install the Microsoft Word, Excel and Powerpoint PDF creation add-ins during installation, you will need to have already installed Microsoft Office 2003, 2007 or 2010 on the server.
- If you do choose to install the PDF creation add-ins during installation, please note:
 - The add-ins will be installed for all users (thus requiring a Nitro PDF Professional license for each Microsoft Office user).
 - To prevent installation of the add-ins deselect the option presented during installation, or set the OFFICEADDINS MSI property value to 0 (see [Customizable MSI Properties](#) in this document).

Configuration and Deployment of Nitro DMS Connector

Requirements

- A test workstation environment, this should already have the required DMS client software installed and configured for your organization.
- Nitro Pro installer (or Nitro Reader)
- Nitro DMS Connector installer (**nitro_pdf_dms2_x86.msi**)

Steps to configure

- Install Nitro Pro/Reader
- Install Nitro DMS Connector



- A new folder will be created on your desktop with shortcuts for each step.
 - Configure access for your DMS as required and exit the configuration tool.
 - (Optionally) Add additional configuration parameters the XML files as described in the next section.
 - Test to ensure that the DMS can be correctly accessed via Nitro (under the File > DMS menu)
 - Create the installer for deployment with the new configuration
- You will now have three files for deployment, nitro_pdf_dms2_x86.msi, nitro_pdf_dms2_x86.mst and nitro_pdf_dms2_x86.cab can now be copied to a network share for deployment.
- **Note: If you are generating this on an operating system earlier than Windows 7, or Windows 2008 R2, you will need to replace the MSI in the output folder with the original MSI used for installation.**

Note that the desktop folder is only created when the Nitro DMS Connector is installed without a configured MST file.

Additional configuration options

In addition to the configuration options displayed via the configuration tool, additional configuration options can be found within swiftwriter.xml. These preferences have been added to enforce strict document management workflows present with some enterprise systems. These should only be set in Nitro if your DMS workflows also restrict these options.

- *AllowSaveOverwrite* – true/false, show the “overwrite existing version” options when Saving the document
- *AllowSaveNewVersion* – true/false, show the “save new version” button when Saving the document
- *AllowSaveNewDocument* – true/false, show the “save new document” button when Saving the document.

Software Activation & Nalpeiron DRM

Nitro Pro 7 includes a software activation system to prevent unauthorized use of the product. This service is provided by Nalpeiron and requires machines to be able to access <http://www.internetactivation.com/> during installation and removal³.

Once the serial number is embedded as the NP SERIAL property in the MSI, the system will automatically attempt to activate during installation. The serial number is not exposed to the end user and if this fails manual activation with the serial number is required before the product can be used.

During removal the software will automatically be de-activated and the license issued to the

³ If your network requires proxy configuration for internet access, please contact the sales team with your configuration details and we can provide a custom installer for you.



PC will be returned to the central activation server.

In addition, Nitro Pro 7 implements concurrency checking to ensure that the number of copies of Nitro Pro in use does not exceed the number of licenses on the machine. Standard licenses permit a single copy of Nitro Pro to run at any one time on the machine.

Uninstallation and Removal of the Nalpeiron Service

In order to keep track of licenses Nitro Pro installs a small service that runs in the background, as this service may be utilized by other products also using Nalpeiron Activation solutions it will not be automatically removed when Nitro Pro is uninstalled.

If you are certain no other products are utilizing the Nalpeiron system, you can manually remove the service with by executing the following commands from an Administrative command prompt.

```
net stop nlsx86cc
sc delete nlsx86cc
del %windir%\system32\nlssrv32.exe (32-bit systems)
del %windir%\SysWOW64\nlssrv32.exe (64-bit systems)
```

Updating Your Software

The MSI installer does not automatically check for updates, as in many environments the end user will not have permission to install software updates.

For users who are deploying with the default preferences, no additional steps need to be taken. Nitro Pro can simply be delivered as an update via your chosen deployment tool.

If you have custom preferences embedded in a cab file however, you will need to recreate the transform file first, then update using your chosen deployment tools.

To obtain the latest installation files, please contact a Support Representative.



Contacting Support

For any issues, please contact our support team via our website.

<http://www.nitropdf.com/support/premium-support.aspx>

For the quickest response, please include as much information as possible including

- Company Name
- Your Nitro Account Executive
- Serial number(s)
- License type(s)
- Application version
- Operating System(s)
- Anti-virus software used
- Deployment methods

For Remote Desktop Services/XenApp deployments please also include

- Server Operating System
- Application Delivery method (RDS, Streamed, Published App, Published Desktop, etc.)
- Size of farm
- Virtualization methods, if any.